



CDBG-MIT Action Plan Overview

SEPT. 25, 2019

Public Hearing No. 2 East Baton Rouge Parish

Se pondrán a disposición los materiales
en idioma español cuando se los
solicite. Envíe las solicitudes a
watershed@la.gov.

Khi có yêu cầu, tài liệu sẽ được cung
cấp bằng tiếng Việt. Vui lòng gửi yêu
cầu đến địa chỉ watershed@la.gov.

LOUISIANA
WATERSHED
INITIATIVE

working together for sustainability and resilience

Agenda

- Call to order
- Roll call
- Pledge of Allegiance
- Background on the Louisiana Watershed Initiative
- CDBG-MIT funds and federal rules
- Draft Action Plan
- Feedback and input
- Next steps
- Business item: Publish draft Action Plan



Background on the Louisiana Watershed Initiative



Context

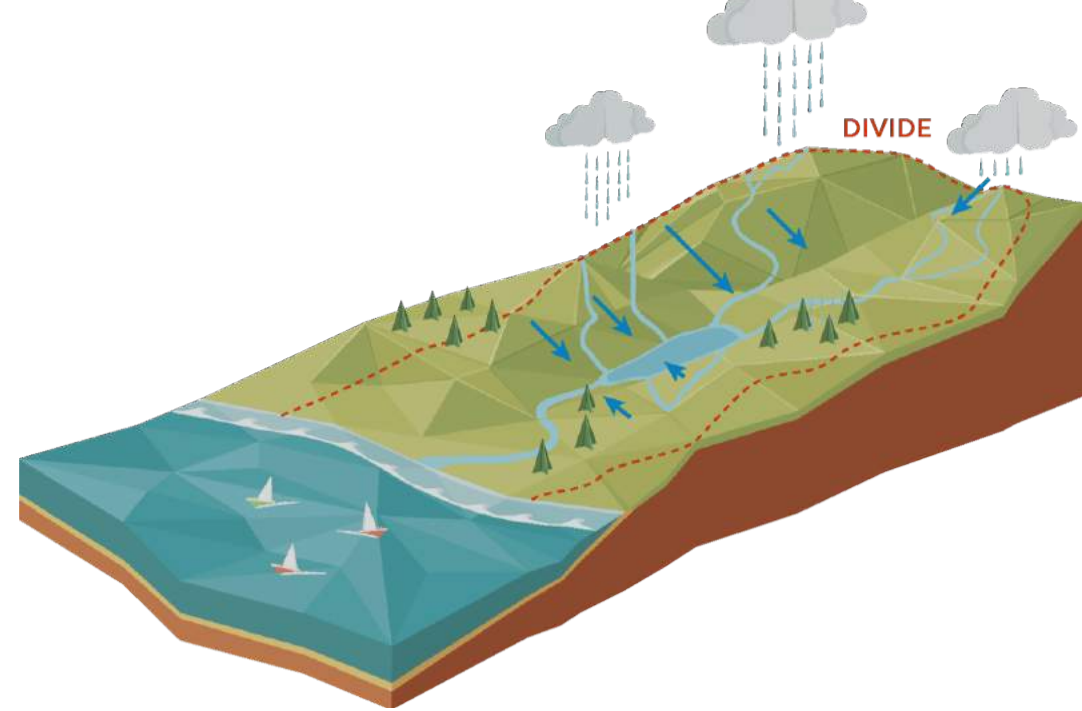
- Louisiana's landscape is **very flat**, has many **water** bodies, and receives a lot of **rain**—the sources of our floods are **complex**.
- Our flood risk is **changing**—places are flooding now that have never flooded before.
- Flood risk is **interconnected**—where the rain falls is not necessarily where flooding will occur.
- We must understand and address how **actions taken in one community** can impact regional flood risk.

Louisiana's approach to addressing flood risk relies on several key elements

- Better data and modeling capabilities.
- Watershed-based coordination at all levels of government.
- Investments in evidence-based flood risk reduction projects.
- New or modified approaches to development.

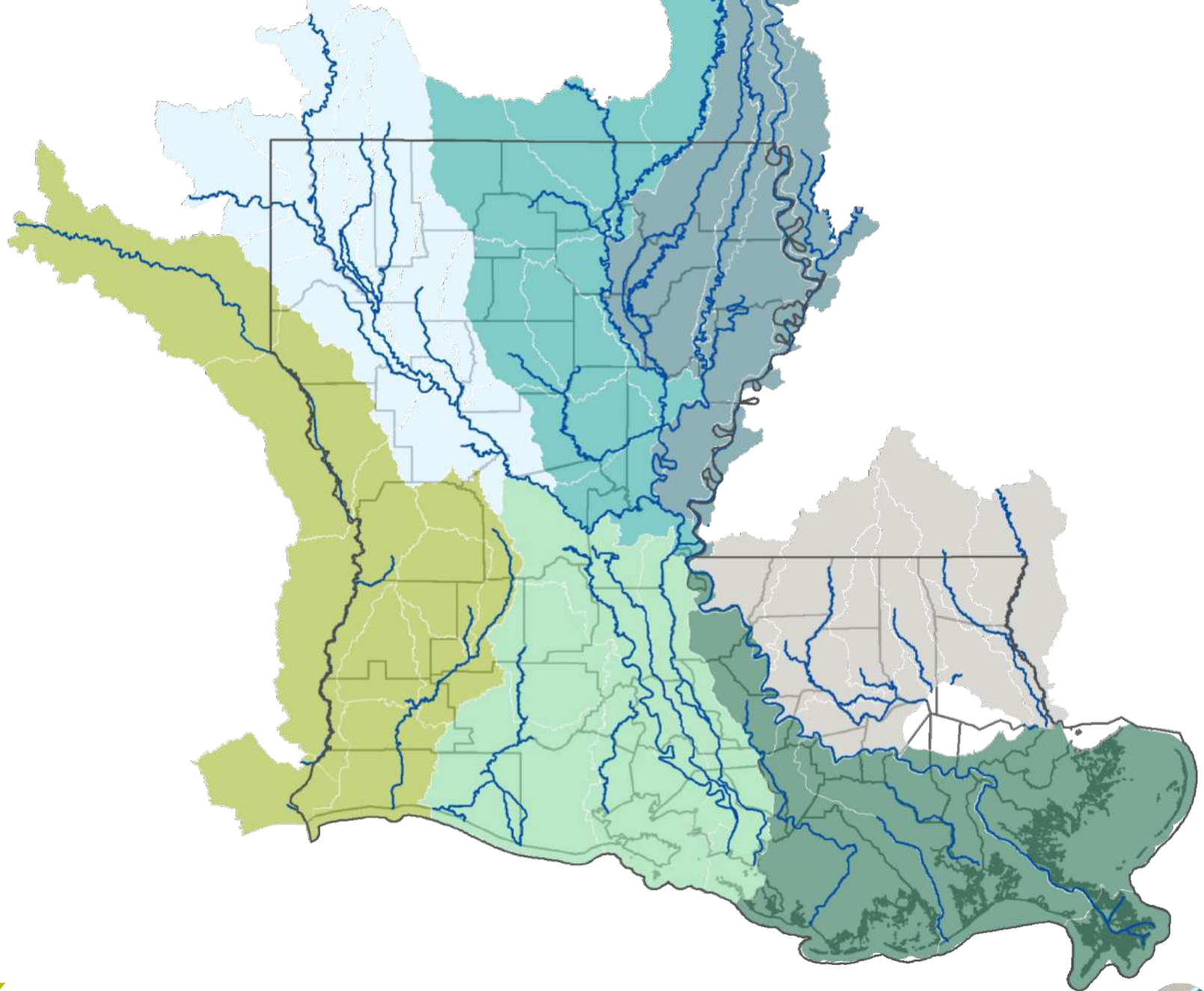
Watershed-Based Floodplain Management

- A **watershed**, commonly referred to as drainage basin or catchment, is an area of land that drains all streams and rainfall to a common point.
- Large watersheds, like the Mississippi River basin, contain thousands of smaller watersheds. Natural ridges are often the boundaries between watersheds.
- Managing flood risk based on watersheds helps communities understand and address how decisions may impact upstream or downstream areas.



The Challenge

Louisiana's watersheds are not defined by political boundaries.



Platform for Change

“It’s harder. It requires more work. It’s politically risky, but it is the right thing to do.”

- Gov. John Bel Edwards



LOUISIANA WATERSHED INITIATIVE

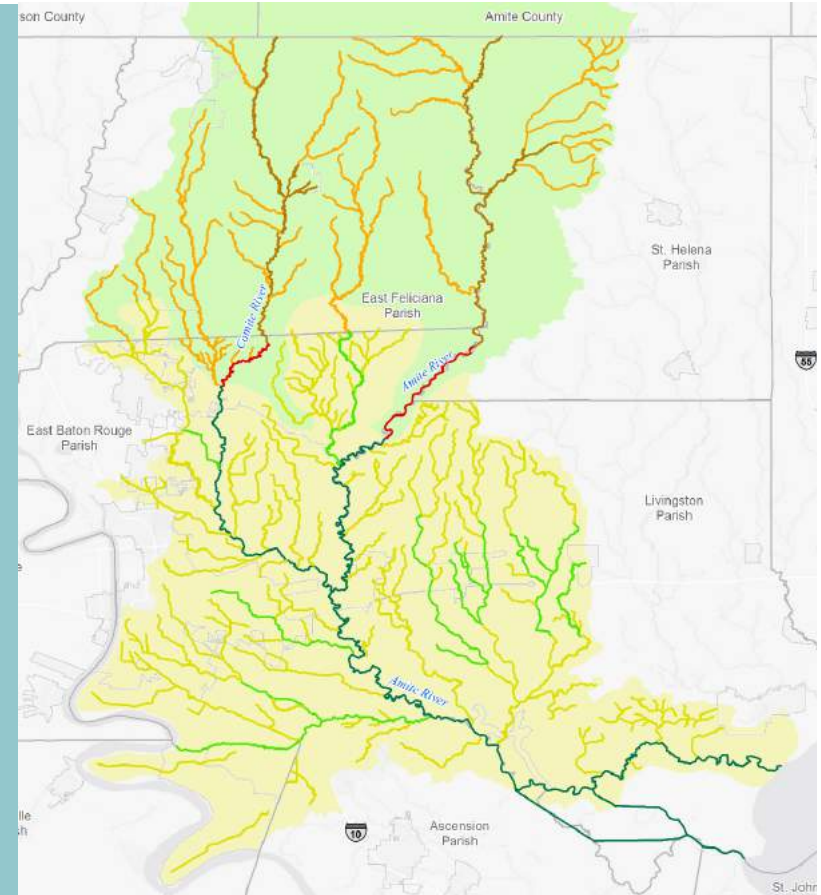
working together for sustainability and resilience



Watershed Modeling is Underway

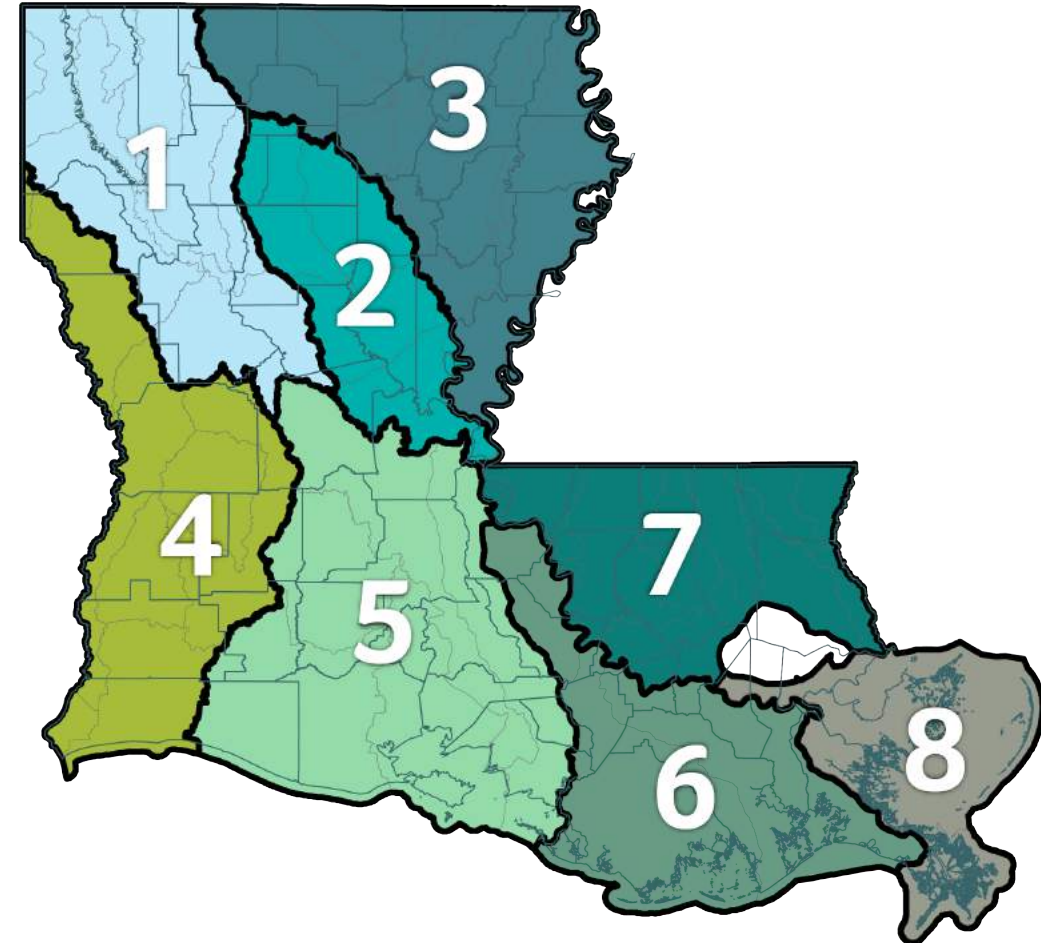
SCIENCE-BASED UNDERSTANDING OF RISK

- In May, DOTD issued requests for qualifications to develop watershed models for the state's 59 watersheds.
- The recently completed Amite River Basin model is an example.
- The state is collaborating with experts throughout the country to build world-class models.



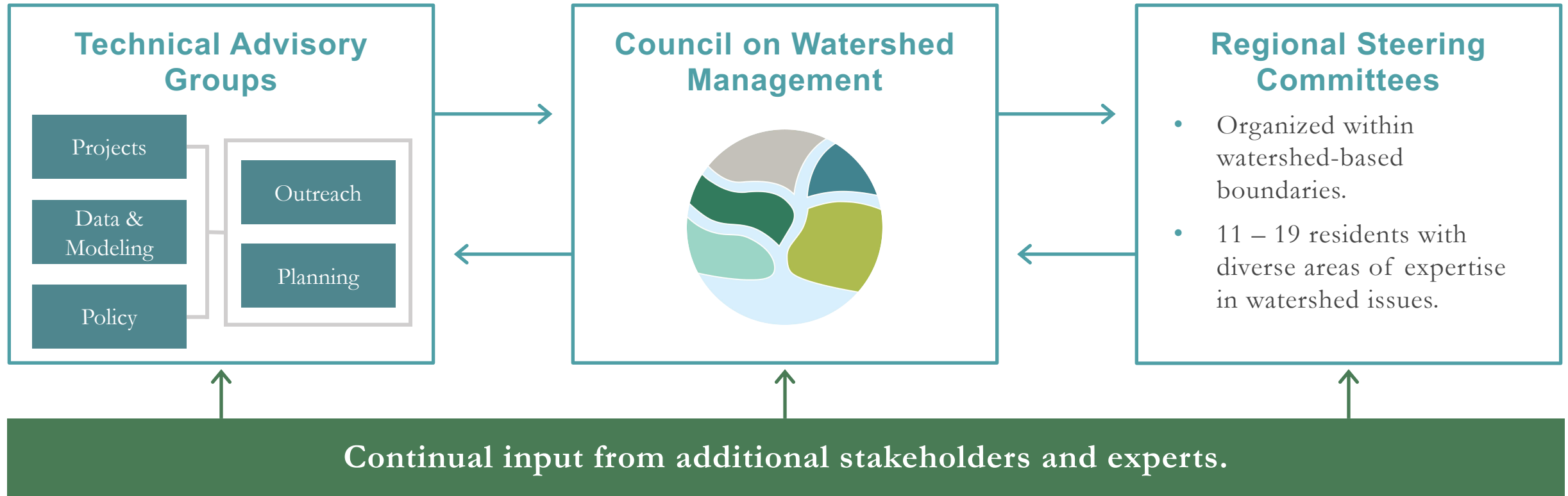
Local Leaders are Coordinating WATERSHED-BASED DECISION MAKING

- Eight watershed regions will coordinate modeling and planning activities throughout the state.
- The state is offering grant funding to build local technical capacity for watershed and floodplain management activities, with awards expected in January 2020.



Local Leaders are Coordinating

SHARING RESPONSIBILITY FOR RESILIENCE



\$1.2 Billion in Mitigation Funds

Congressional Allocation in 2018

HUD Guidance Published Aug. 30, 2019



HUD Rules Overview

THE STATE'S RESPONSE TO FEDERAL REQUIREMENTS

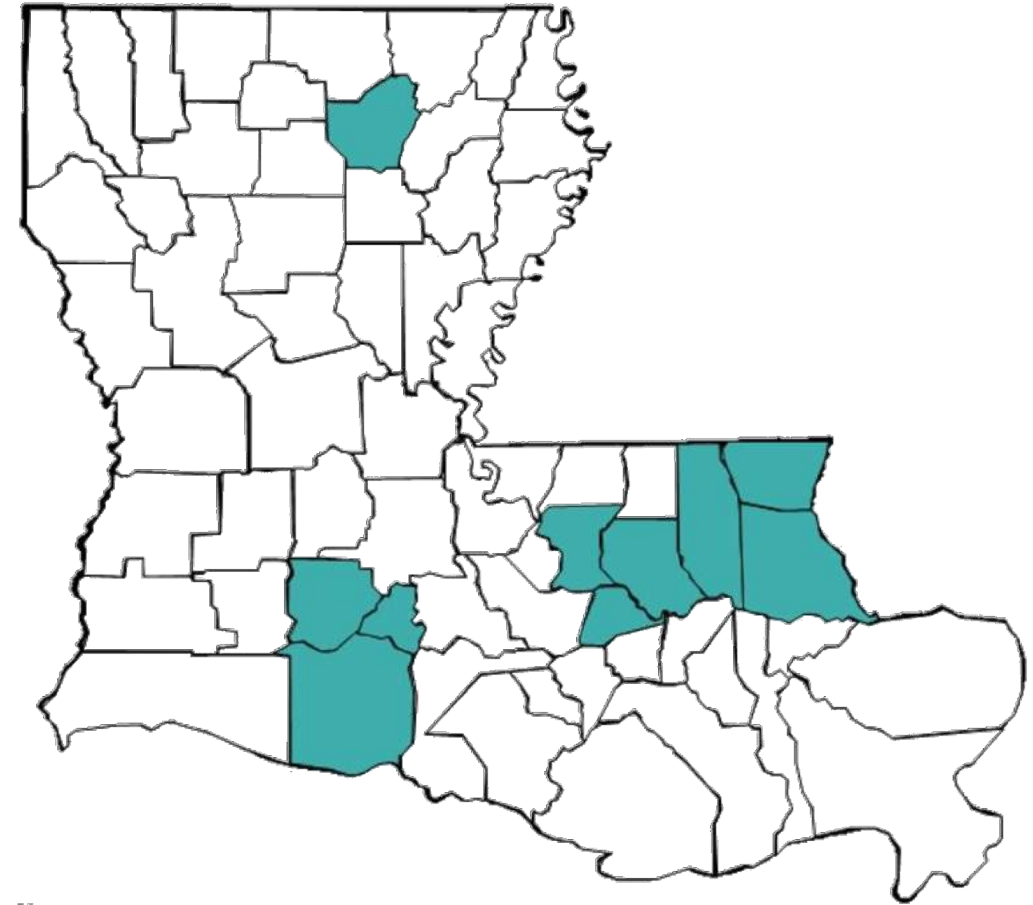
- All funds must be used for **mitigation activities**.
- At least 50 percent of funds must benefit **most impacted and distressed areas**, or MIDs, identified by HUD.
- HUD must approve the state's **Action Plan** before funds are available.
- The Action Plan will describe the needs and proposed approach for the funds.
- Four **public hearings** will collect comments on the draft Action Plan.
- The draft Action Plan will be posted online for **45 days**, beginning Sept. 26.



HUD Most Impacted or Distressed Areas

THE STATE'S RESPONSE TO FEDERAL REQUIREMENTS

- MIDs include: East Baton Rouge, Livingston, Ascension, Tangipahoa, Ouachita, Lafayette, Vermilion, Acadia, Washington and St. Tammany parishes.
- At least \$607 million (50 percent of these funds) must be spent in or benefit these areas.



Louisiana's Draft Action Plan



Action Plan Overview

- Details the state's approach for using the funds.
- Includes draft projects, data collection and modeling programs.
- Incentivizes policy measures to advance community resilience.



Draft Action Plan

- **\$1.2 billion** in CDBG-MIT funds to **reduce** statewide flood risk.
- Invest in **mitigation activities** and improve development standards.
- Includes more than **\$970 million** for **watershed projects and programs**, as well as funding for **improved data gathering and modeling**.



Draft Action Plan

DATA DRIVEN SOLUTIONS

- High-quality gauge network.
- Watershed models that empower local decision making.
- Informed decisions based on science.

WATERSHED MODELING



Draft Action Plan

DATA DRIVEN SOLUTIONS

- High-quality gauge network.
- Watershed models that empower local decision making.
- Informed decisions based on science.

WATERSHED MODELING

PROJECTS THAT REDUCE FLOOD RISK

- Enhanced natural retention and local drainage functions.
- Focus on helping to move people out of harm's way.

FLOOD CONTROL PROJECTS



Draft Action Plan

DATA DRIVEN SOLUTIONS

- High-quality gauge network.
- Watershed models that empower local decision making.
- Informed decisions based on science.

WATERSHED MODELING

PROJECTS THAT REDUCE FLOOD RISK

- Enhanced natural retention and local drainage functions.
- Focus on helping to move people out of harm's way.

FLOOD CONTROL PROJECTS

COLLABORATION IS KEY

- Regional watershed management that empowers collaboration between stakeholders and decision makers.
- Building better to mitigate the next disaster's impact.

REGIONAL PROGRAMS



Action Plan Timeline

Date	Action
October 2018 – August 2019	Engagement with local stakeholders
Aug. 30, 2019	Federal rules published
Sept. 19, 2019	Lafayette public hearing
Sept. 25, 2019	Baton Rouge public hearing
Oct. 24, 2019	Monroe public hearing
Oct. 29, 2019	Mandeville public hearing
Fall 2019	Action Plan submitted to HUD
Late 2019 – Early 2020	HUD review period
Feb. 3, 2020	Action Plan submittal deadline
Spring 2020	Grant agreement executed and line of credit established



Public Comment

3 MINUTE TIME LIMIT



Next Steps



Public Hearing Schedule

LAFAYETTE

1 p.m. Thursday, Sept. 19

City-Parish Council Auditorium

Lafayette Consolidated Government

705 W. University Ave.

Lafayette, LA 70506

WEST MONROE

1:30 p.m. Thursday, Oct. 24

Ouachita Parish Emergency Operations Center

Fire Department Training Center

1000 New Natchitoches Road

West Monroe, LA 71292

BATON ROUGE

1:30 p.m. Wednesday, Sept. 25

House Committee Room 5

Louisiana State Capitol

900 N. Third St.

Baton Rouge, LA 70802

MANDEVILLE

6 p.m. Tuesday, Oct. 29

Council Chambers, Building A

St. Tammany Parish Government Administrative Complex

21490 Koop Drive

Mandeville, LA 70471



 @LAWATERSHEDINITIATIVE

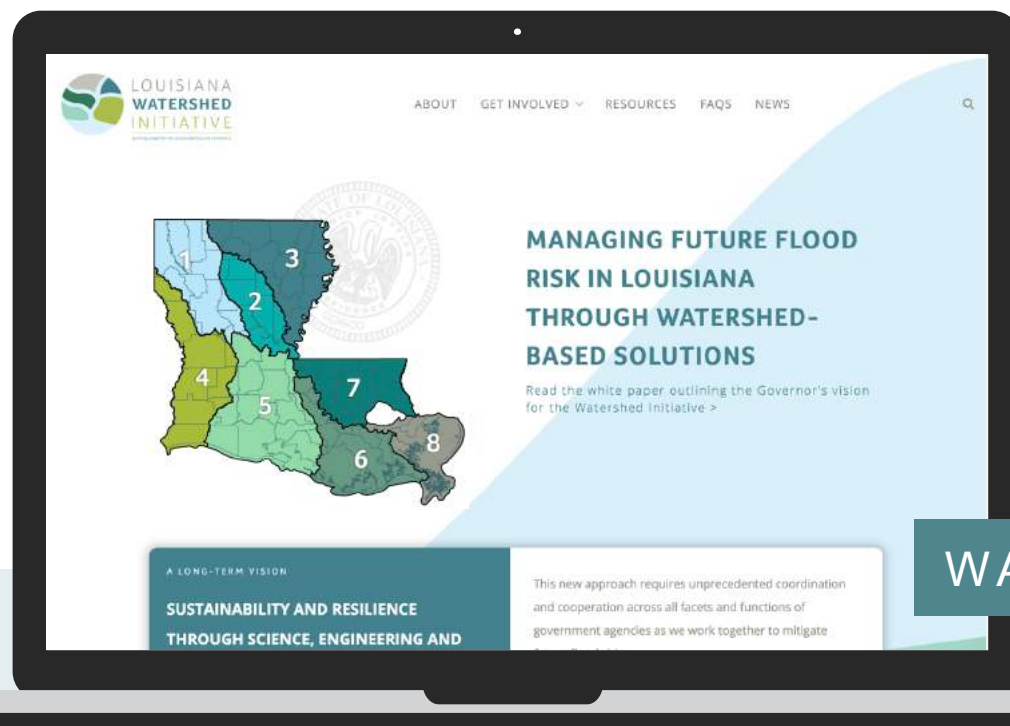
 @LAWATERSHED

 WATERSHED@LA.GOV

THANK YOU

Se pondrán a disposición los materiales en idioma español cuando se los solicite. Envíe las solicitudes a watershed@la.gov.

Khi có yêu cầu, tài liệu sẽ được cung cấp bằng tiếng Việt. Vui lòng gửi yêu cầu đến địa chỉ watershed@la.gov.



WATERSHED.LA.GOV