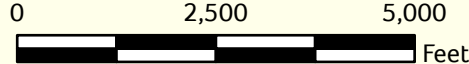
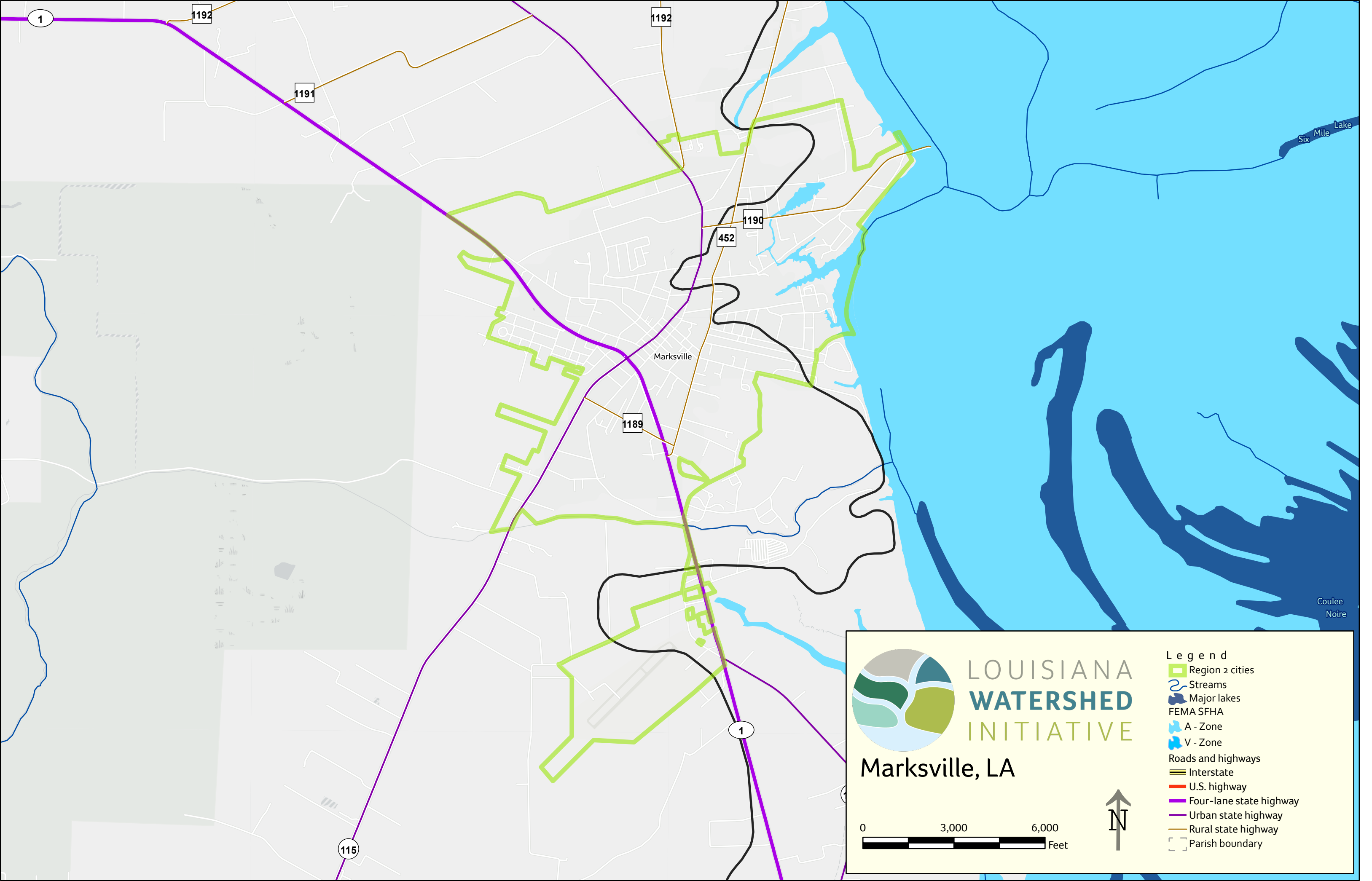


LOUISIANA
WATERSHED
INITIATIVE

Jonesboro, LA



- Legend**
- Region 2 cities
 - Streams
 - Major lakes
 - FEMA SFHA
 - A - Zone
 - V - Zone
 - Roads and highways
 - Interstate
 - U.S. highway
 - Four-lane state highway
 - Urban state highway
 - Rural state highway
 - Parish boundary



1

1192

1191

1192

1190


452

1189

Marksville

Six Mile Lake


Coulee Noire



LOUISIANA
WATERSHED
INITIATIVE

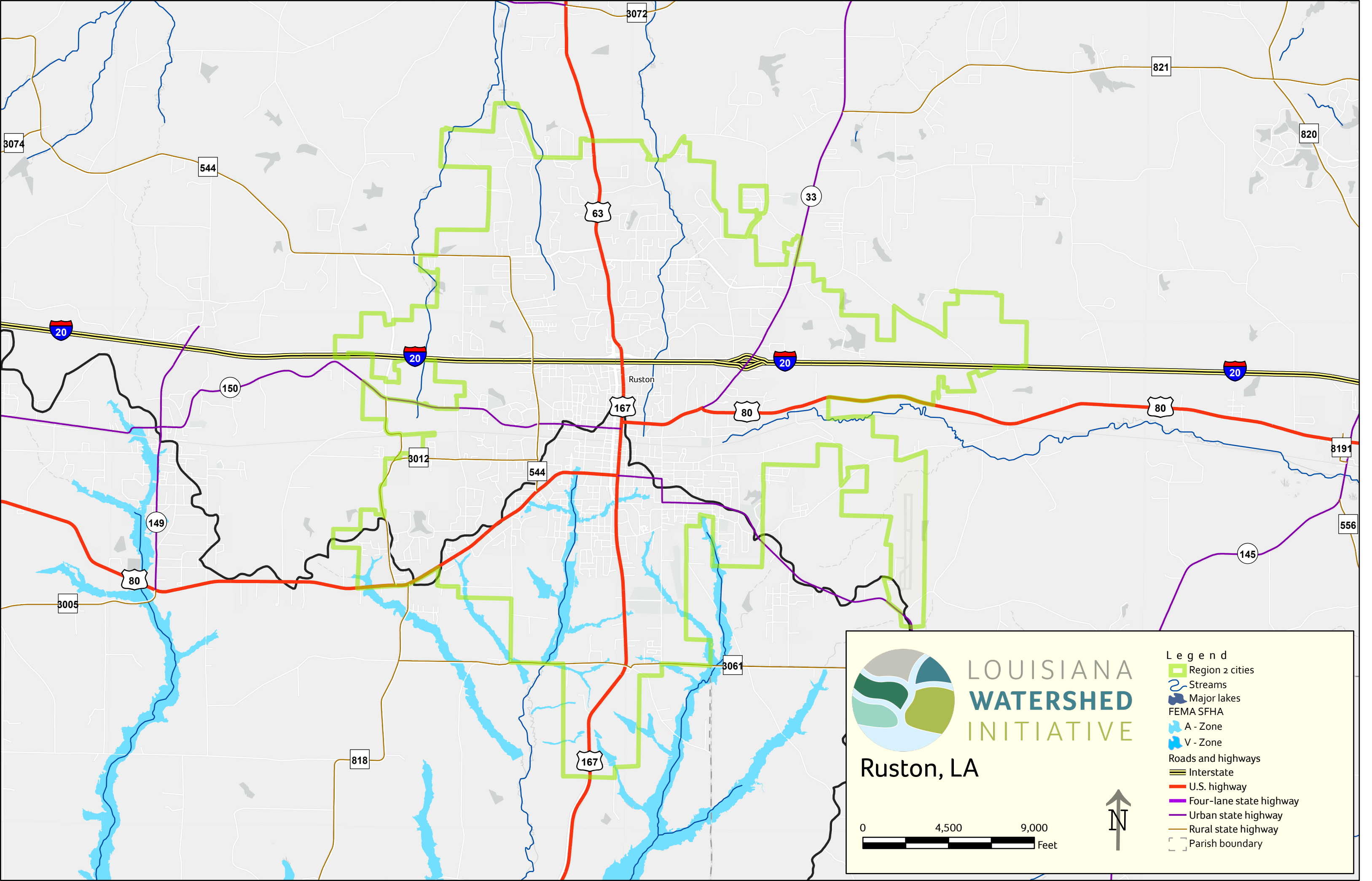
Marksville, LA

0 3,000 6,000 Feet



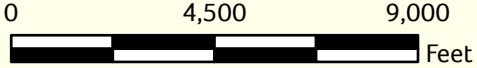
Legend

- Region 2 cities
- Streams
- Major lakes
- FEMA SFHA
 - A - Zone
 - V - Zone
- Roads and highways
 - Interstate
 - U.S. highway
 - Four-lane state highway
 - Urban state highway
 - Rural state highway
- Parish boundary

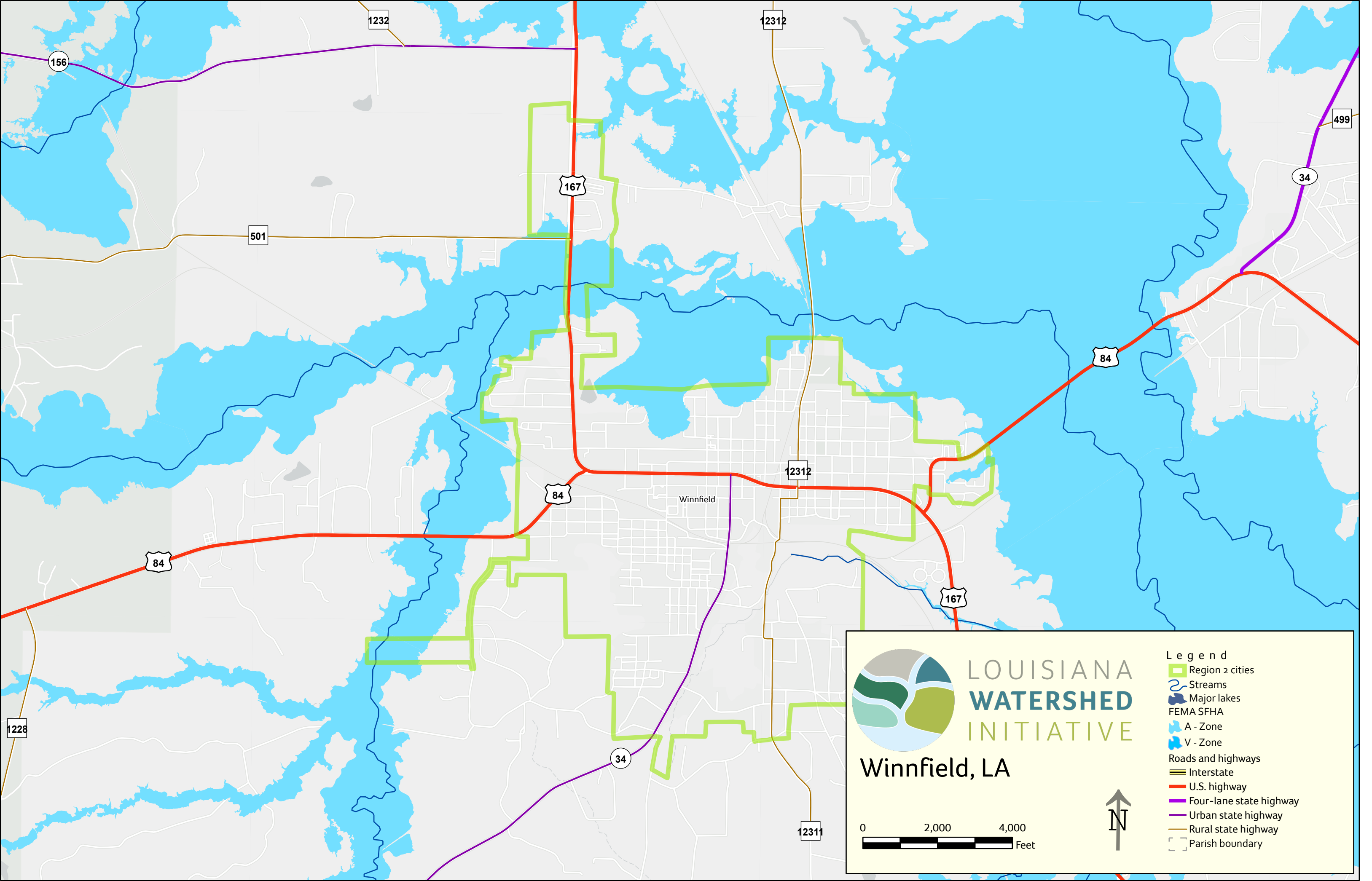



LOUISIANA
WATERSHED
INITIATIVE

Ruston, LA



- Legend**
- Region 2 cities
 - Streams
 - Major lakes
 - FEMA SFHA
 - A - Zone
 - V - Zone
 - Roads and highways
 - Interstate
 - U.S. highway
 - Four-lane state highway
 - Urban state highway
 - Rural state highway
 - Parish boundary






LOUISIANA
WATERSHED
INITIATIVE

Winnfield, LA

02,0004,000

Feet



Legend

- Region 2 cities
- Streams
- Major lakes
- FEMA SFHA
 - A - Zone
 - V - Zone
- Roads and highways
 - Interstate
 - U.S. highway
 - Four-lane state highway
 - Urban state highway
 - Rural state highway
- Parish boundary